

Put the Fun Back in “Family Fun Night”!

Printable directions for the 8 activities
based on *The Very Hungry Caterpillar* by Eric Carle

If you look closely at a butterfly's wings, you will notice that they are the same on both sides. This means that they have **symmetry**.

Symmetry means that if you draw a line down the middle, the two sides will look exactly the same.



Use Symmetry to Make Butterfly Mask

1. Color your butterfly mask. Make sure that the two sides match.
2. Have a grown up help you put on the mask.
3. Throw away any scraps and clean up your work area.



The Very Hungry Caterpillar ate something each day before he finally became a beautiful butterfly. Think about the **sequence** in which the story took place.

Sequence means that something happens in a certain order, one after another.

Sequence what the Caterpillar Ate

1. Think about what the caterpillar ate each day.
2. Glue the boxes onto your paper in the correct order.
3. Write the days of the week under the correct foods.
4. Clean up your work area. Take your project with you.



A **table** is a way to organize information. You can use the information in a table to make a graph. This table shows the foods that the caterpillar ate.

Food	Apple	Pears	Strawberries	Oranges	Plums
Number Eaten	1	2	4	5	3

Make A Bar Graph

1. Look at the information in the table above.
2. Use a crayon to color a box for each of the foods eaten.
3. Read your bar graph. Which food did the caterpillar eat the most of? The least of?
4. Clean up your work area and take your graph with you.



A butterfly is an **insect**. **Insects** have 6 legs. They also have 3 body parts: a head, an abdomen, and a thorax. Insects also have antennae.

- The **head** is the part of the insect that contains the eyes and the brain.
- The **thorax** is the body part in the middle. Legs and wings attach to the thorax.
- The **abdomen** is the tail area of the insect. It contains the heart and digestive system of the insect.
- The **antennae** are attached to the head of the butterfly. They are used for the sense of smell and for balance.

Identify the Parts of a Butterfly

1. Read about each insect body part.
2. Write the name of each body part on the butterfly picture.
3. Clean up your work area and take your picture with you.



Each year, up to 100 million monarch butterflies **migrate** south to the warmer climates to hibernate for the winter season. Some travel up to 2,500 miles! Many of them travel to the mountains of Mexico. There, they cluster together, or nest, in Oyamel trees.

Map Monarch Migration

1. Pretend you are a butterfly who lives in North America. When cooler weather arrives in the fall, you decide to migrate south to warmer climates.
2. Color your map. Make the United States one color and Mexico another color.
3. Tape one end of your yarn to the star in the United States.
4. Insert the other end of the yarn into the holes in the butterfly, so that the yarn is on the back side of the butterfly.
5. Tape the loose end of the yarn to the star in Mexico on the map. Now you can move your butterfly south for the winter, and back north for the spring.
6. Throw away your scraps, and clean up your work area. Take your map with you.



A caterpillar is a furry, wormlike insect that is in the first stages of becoming a butterfly. They are mostly **herbivores**. An **herbivore** is a plant eater.

Caterpillars have tubular, segmented bodies. Most caterpillars have 10 body segments and 3 sets of legs.

Make a Caterpillar Bookmark

1. Press the Bingo marker straight down on the bookmark to make a dot. The dots will be the segments of a caterpillar.
2. Continue stamping, one right next to the other, until your caterpillar has 10 body segments.
3. Use the marker to draw eyes, antennae, and feet on your caterpillar.
4. Clean up your work area and take your bookmark with you.



The **life cycle** of a butterfly begins with an egg.

The larva, or caterpillar, hatches from the egg. The larva eats a tremendous amount.

The caterpillar forms a hard outer shell called a pupa, or chrysalis. Inside the pupa, the caterpillar changes into a butterfly.

A fully-grown adult butterfly emerges from the chrysalis.

The adult female butterfly lays an egg, and the life cycle continues!

Sequence the Life Cycle of a Butterfly

1. Color the caterpillar, pupa, and butterfly. Most eggs are white.
2. Glue the egg, larva, pupa, and butterfly in the correct order, so that they make a circle on your paper.
3. Draw arrows showing the order of the life cycle.
4. Clean up your work area and take your paper with you.



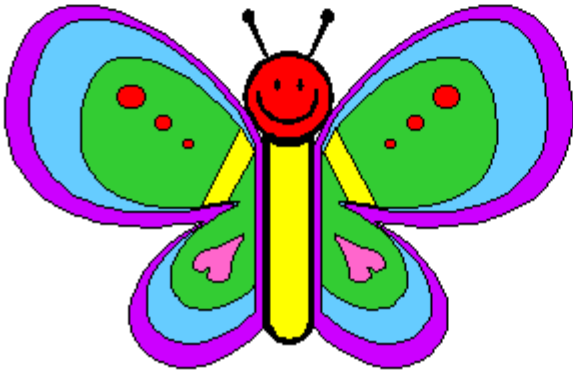
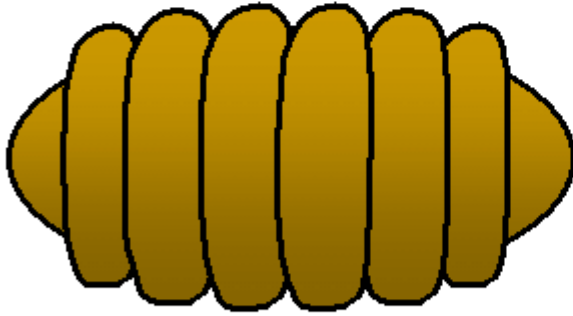
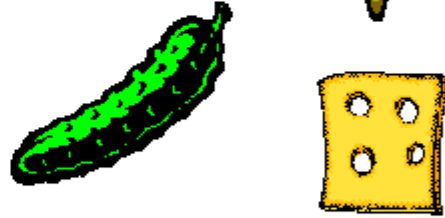
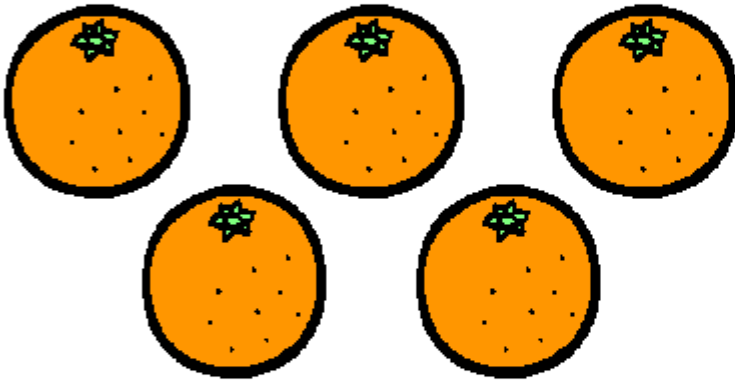
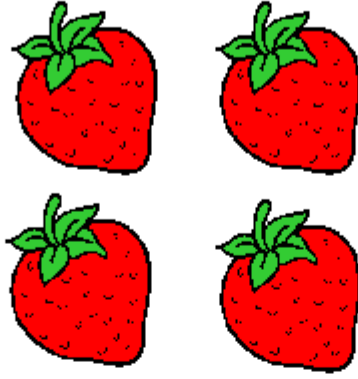
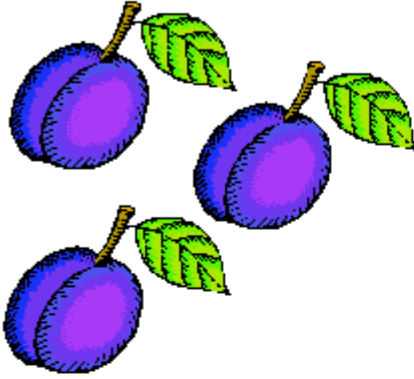
Eric Carle is the author and **illustrator** of "The Very Hungry Caterpillar." An **illustrator** is a person who makes pictures for books.

He paints his own tissue paper, and then cuts out shapes to make his colorful illustrations.

Make a Tissue Paper Butterfly

1. Draw a face on the top of the clothespin with the marker.
2. To make the wings, scrunch the tissue paper squares together in the middle. Pinch the clothespin so it opens. Place the tissue paper inside the open area of the clothespin.
3. Wrap pipe cleaners around the top of the clothespin to make the antennae.
4. Clean up your work area and take your butterfly with you.





The Very Hungry Caterpillar sequencing cards